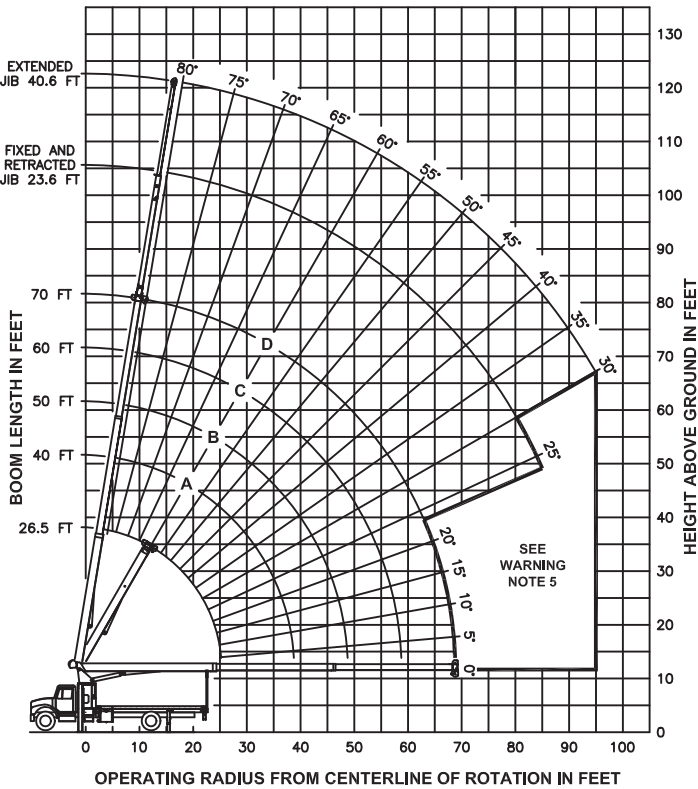




RANGE DIAGRAM



LOAD RATINGS IN LBS WITH OUTRIGGERS AND STABILIZERS EXTENDED
LMI CODE #1

BOOM LENGTH IN FEET	BOOM ANGLE	BOOM LENGTH AND ANGLE MARKER			
		A	B	C	D
5	79	34000			
8	73	23930	79	22330	
10	68	20230	76	18670	80
12	63	17600	73	16100	77
15	55	14420	69	13400	74
20	40	10350	61	10540	68
25	12	7830	52	8070	61
30			41	6400	54
35			28	5160	47
40					37
45					25
50					35
55					24
60					33
65					23
70					
75					
80					
85					
90					
95					

JIB LOAD RATINGS IN LBS WITH OUTRIGGERS AND STABILIZERS EXTENDED

BOOM LENGTH IN FEET	FIXED JIB		TELESCOPIC JIB	
	LMI CODE #2	LMI CODE #3	LMI CODE #4	LMI CODE #4
10	23.6 FT	23.6 FT	40.6 FT	
20	80	80	4200	
25	78	78	4000	80
30	75	75	3800	78
35	71	71	3380	75
40	68	68	3010	72
45	65	65	2650	69
50	61	61	2340	66
55	57	57	2060	63
60	53	53	1790	60
65	49	49	1460	57
70	45	45	1180	54
75	40	40	950	51
80	34	34	750	47
85	27	27	570	43
90			39	700
95			34	560

350 LBS	240 LBS	190 LBS	160 LBS	140 LBS	DEDUCTIONS FOR STOWED FIXED JIB
530 LBS	350 LBS	280 LBS	240 LBS	200 LBS	DEDUCTIONS FOR STOWED TELESCOPIC JIB

WARNING

- THE OPERATOR MUST READ AND UNDERSTAND THE OWNER'S MANUAL BEFORE OPERATING THIS CRANE.
- POSITIONING OR OPERATION OF CRANE BEYOND AREAS SHOWN ON THIS CHART IS NOT INTENDED OR APPROVED EXCEPT WHERE SPECIFIED IN OWNER'S MANUAL.
- LOADED BOOM ANGLES AT SPECIFIED BOOM LENGTHS GIVE ONLY AN APPROXIMATION OF THE OPERATING RADIUS. THE BOOM ANGLE BEFORE LOADING SHOULD BE GREATER TO ACCOUNT FOR DEFLECTIONS. DO NOT EXCEED THE OPERATING RADIUS FOR RATED LOADS.
- THE OPERATING RADIUS SHOWN IN THE JIB RATING CHART IS FOR FULLY EXTENDED BOOM ONLY. WHEN BOOM IS NOT FULLY EXTENDED, USE ONLY LOADED BOOM ANGLE TO DETERMINE LOAD RATING OF JIB.
- BOOM MUST BE FULLY RETRACTED WHEN JIB IS ERCTED, BEFORE LOWERING BOOM THROUGH THIS AREA.
- FOR BOOM ANGLES NOT SHOWN ON JIB LOAD RATING CHART, USE RATING OF NEXT LOWER BOOM ANGLE.
- FOR BOOM LENGTHS NOT SHOWN, USE RATING OF NEXT LONGER BOOM LENGTH. FOR RADII NOT SHOWN, USE RATING OF NEXT LONGER RADIUS.
- CRANE LOAD RATINGS ON OUTRIGGERS ARE BASED ON FREELY SUSPENDED LOADS WITH THE MACHINE LEVELED AND STANDING ON A FIRM UNIFORM SUPPORTING SURFACE. NO ATTEMPT SHALL BE MADE TO MOVE A LOAD HORIZONTALLY ON THE GROUND IN ANY DIRECTION.
- PRACTICAL WORKING LOADS DEPEND ON SUPPORTING SURFACE, WIND, AND OTHER FACTORS AFFECTING STABILITY SUCH AS HAZARDOUS SURROUNDINGS, EXPERIENCE OF PERSONNEL, AND PROPER HANDLING, ALL OF WHICH MUST BE TAKEN INTO ACCOUNT BY THE OPERATOR.
- THE MAXIMUM LOAD WHICH MAY BE TELESCOPED IS LIMITED BY HYDRAULIC PRESSURE, BOOM ANGLE, AND BOOM LUBRICATION. IT IS SAFE TO ATTEMPT TO TELESCOPE ANY LOAD WITHIN THE LIMITS OF THE LOAD RATING CHART. BOOM MUST BE FULLY RETRACTED AGAINST BOOM STOPS AT ALL TIMES WHEN LIFTING MINIMUM BOOM LENGTH CAPACITY LOADS.

INFORMATION

- DEDUCTIONS MUST BE MADE FROM RATED LOADS FOR STOWED JIB, OPTIONAL ATTACHMENTS, HOOKS, AND LOADBLOCKS (SEE DEDUCTION CHART). WEIGHTS OF SLINGS AND ALL OTHER LOAD HANDLING DEVICES SHALL BE CONSIDERED A PART OF THE LOAD.
- CRANE LOAD RATINGS WITH OUTRIGGERS ARE BASED ON OUTRIGGERS AND STABILIZERS EXTENDED AND SET WITH MACHINE LEVELED.
- LOAD RATINGS ABOVE THE HEAVY LINE ARE STRUCTURALLY LIMITED CAPACITIES. LOAD RATINGS BELOW THE HEAVY LINE ARE STABILITY LIMITED CAPACITIES AND DO NOT EXCEED 85% OF TIPPING.

DEFINITIONS

- OPERATING RADIUS IS THE HORIZONTAL DISTANCE FROM THE AXIS OF ROTATION TO THE CENTER OF THE VERTICAL HOIST LINE OR TACKLE WITH LOAD APPLIED.
- LOADED BOOM ANGLE AS SHOWN IN THE COLUMN HEADED BY α IS THE INCLUDED ANGLE BETWEEN THE HORIZONTAL AND LONGITUDINAL AXES OF THE BOOM BASE AFTER LIFTING RATED LOAD AT RATED RADIUS.

LMI OPERATING CODES

SETTING CRANE CONFIGURATION	SETTING CRANE WITH PERSONNEL LIFTING PLATFORM
#1 --- MAIN BOOM	#5 --- PERSONNEL LIFTING PLATFORM ON MAIN BOOM
#2 --- FIXED JIB	#6 --- PERSONNEL LIFTING PLATFORM ON FIXED JIB
#3 --- TELE JIB - RETRACTED	#7 --- PERSONNEL LIFTING PLATFORM ON TELE JIB - RETRACTED
#4 --- TELE JIB - EXTENDED	WARNING: LIFTING PERSONNEL FROM EXTENDED JIB IS NOT APPROVED

ALLOWABLE LINE PULL

1 PART LINE	2 PART LINE	3 PART LINE	4 PART LINE	
				<p>ANTI-TWO-BLOCK SYSTEM MUST BE IN GOOD OPERATING CONDITION BEFORE OPERATING CRANE. REFER TO OWNER'S MANUAL.</p> <p>KEEP AT LEAST 3 WRAPS OF LOAD LINE ON DRUM AT ALL TIMES.</p>
8500 LBS	17000 LBS	25500 LBS	34000 LBS	
7400 LBS	14800 LBS	22200 LBS	29600 LBS	<p>9/16" - 6X25 IWRC (3.5:1 S.F.) 29750 LBS. BREAKING STRENGTH</p> <p>9/16" ROT RESISTANT (5.0:1 S.F.) 37000 LBS. BREAKING STRENGTH</p>

DEDUCTIONS FROM RATED LOADS FOR LOAD HANDLING DEVICES SUPPLIED BY MANITEX

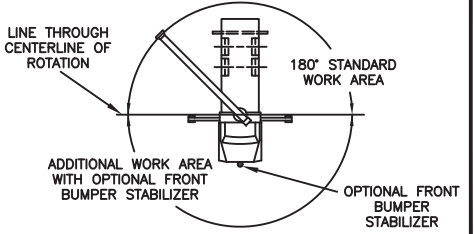
OVERHAUL BALL	SEE OVERHAUL BALL MFR. NAMEPLATE
LOAD BLOCKS	SEE BLOCK MFR. NAMEPLATE
HOSE REEL	160 LBS
SWING AROUND JIB	SEE LOAD CHART

WARNING
LIFTING OFF THE MAIN BOOM POINT WHILE THE JIB IS ERCTED IS NOT INTENDED OR APPROVED.



MODELS
1770C & 1770T

CRANE MEETS ANSI B30.5 REQUIREMENTS
7300086-007 NR



AREA OF OPERATION