

BOOM LOAD CAPACITIES IN LBS. WITH FULL SPAN OUTRIGGERS (24 FT)

load radius (feet)	31 ft BOOM		51 ft BOOM		70 ft BOOM		89 ft BOOM		108 ft BOOM		127 ft BOOM	
	∠	(lb)	∠	(lb)	∠	(lb)	∠	(lb)	∠	(lb)	∠	(lb)
5	75	80 000										
8	69	74 000										
10	65	64 000										
12	60	54 000	74	40 000								
15	56	42 000	70	35 500	76	31 000						
20	45	29 000	64	31 000	72	26 000	77	19 300				
25	28	22 000	57	23 400	68	22 100	73	16 600	77	12 600		
30			50	18 300	63	18 700	70	14 600	75	11 800	77	9 500
35			42	14 800	58	15 100	66	13 000	72	10 800	75	9 000
40			33	12 100	53	12 500	62	11 500	69	9 880	73	8 100
45			20	10 100	47	10 400	59	9 500	66	8 900	71	7 200
50					41	8 800	55	8 500	63	7 850	69	6 500
55					34	7 500	51	7 500	60	7 020	66	5 800
60					26	6 300	47	6 500	56	6 150	63	5 300
65					14	5 300	43	5 600	53	5 260	60	4 800
70							37	4 700	49	4 480	58	4 300
75							30	3 950	46	3 900	55	3 900
80							23	3 350	41	3 400	52	3 400
85							9	2 800	37	2 850	49	2 850
90									32	2 350	46	2 350
95									26	1 900	42	1 900
100									22	1 550	37	1 550
105											34	1 200
110											30	900
115												650

0 15500 0 6450 0 2900 0 1450 0 700 SEE NOTE 9

500 350 300 250 200 150

1000 650 450 350 300 250

AREA OF OPERATION

360° CAPACITY WORKING AREA WITH FULL SPAN AND FRONT BUMPER OUTRIGGERS

C/L ROTATION

24 FT FULL SPAN MAIN & AUX OUTRIGGERS SPREAD

DEDUCTIONS FROM RATED LOADS FOR HANDLING DEVICES

OVERHAUL BALL: 230 LBS

1-SHEAVE LOADBLOCK: 360 LBS

2-SHEAVE LOADBLOCK: 500 LBS

3-SHEAVE LOADBLOCK: 600 LBS

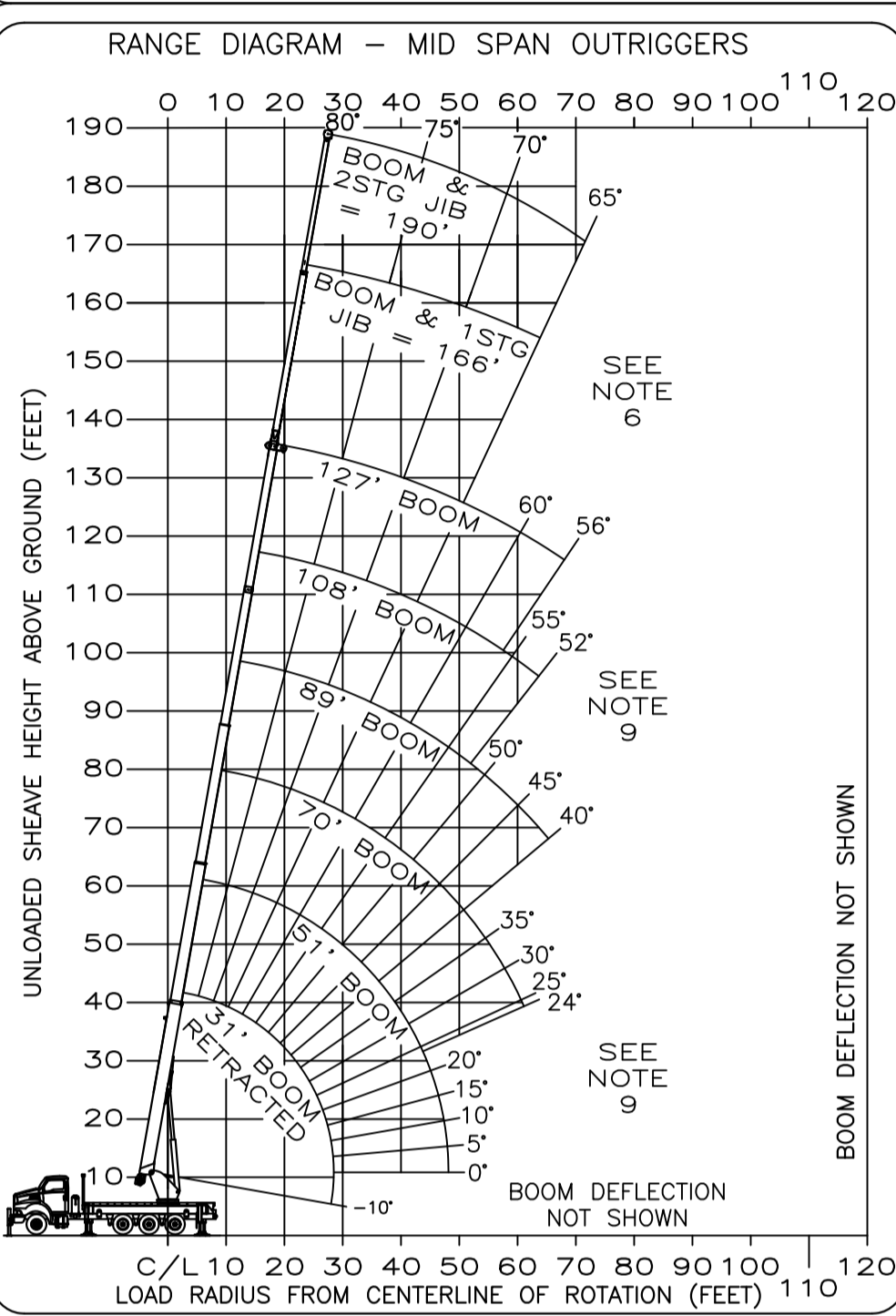
0° BOOM CAPACITIES

STOWED JIB LOAD DEDUCTIONS

FIXED 31 FT JIB DEDUCTIONS

TELESCOPIC JIB DEDUCTIONS

970171978 A (SHEET 1)



BOOM LOAD CAPACITIES IN LBS. WITH MID SPAN OUTRIGGERS (15 FT 8 IN)

load radius (feet)	31 ft BOOM		51 ft BOOM		70 ft BOOM		89 ft BOOM		108 ft BOOM		127 ft BOOM	
	∠	(lb)	∠	(lb)	∠	(lb)	∠	(lb)	∠	(lb)	∠	(lb)
5	75	80 000										
8	69	74 000										
10	65	64 000										
12	60	54 000	74	40 000								
15	56	42 000	70	35 500	76	31 000						
20	45	27 700	64	27 000	72	26 000	77	19 300				
25	28	17 500	57	17 200	68	17 600	73	16 300	77	12 600		
30			50	12 000	63	12 300	70	12 400	75	11 700	77	9 500
35			42	8 700	58	9 100	66	9 200	72	9 000	75	9 000
40			33	6 500	53	6 900	62	7 000	69	7 100	73	7 100
45			20	4 900	47	5 200	59	5 300	66	5 400	71	5 400
50					41	4 000	55	4 100	63	4 150	69	4 150
55					34	3 050	51	3 150	60	3 200	66	3 200
60					26	2 250	47	2 350	56	2 400	63	2 400
65					14	1 600	43	1 700	53	1 750	60	1 750
70							37	1 150	49	1 200	58	1 200

0 8200 0 2150 SEE NOTE 9

500 350 300 250 200 150

1000 650 450 350 300 250

AREA OF OPERATION

360° CAPACITY WORKING AREA WITH MID SPAN AND FRONT BUMPER OUTRIGGERS

C/L ROTATION

15 FT 8 IN MID SPAN MAIN & AUX OUTRIGGERS SPREAD

DEDUCTIONS FROM RATED LOADS FOR HANDLING DEVICES

OVERHAUL BALL: 230 LBS

1-SHEAVE LOADBLOCK: 360 LBS

2-SHEAVE LOADBLOCK: 500 LBS

3-SHEAVE LOADBLOCK: 600 LBS

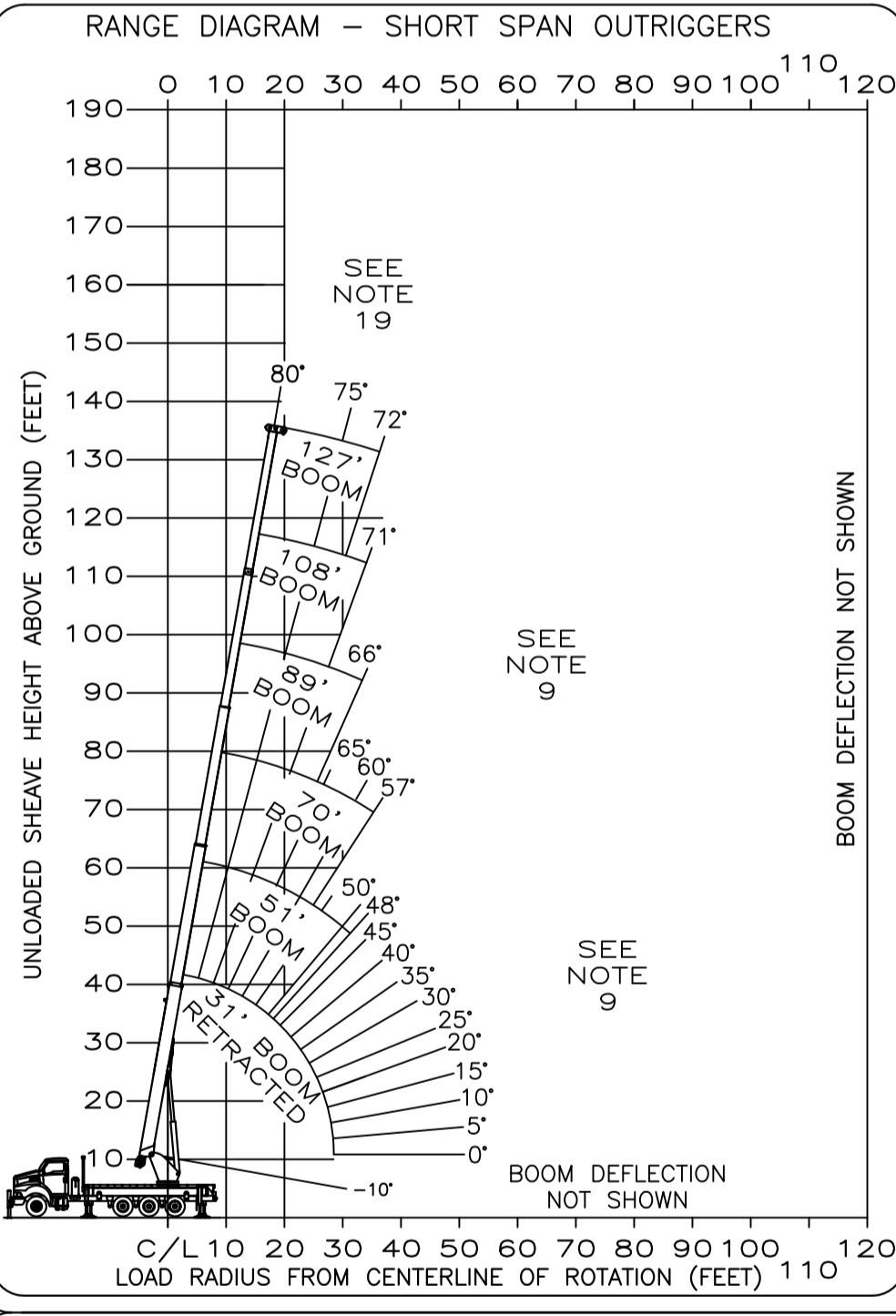
0° BOOM CAPACITIES

STOWED JIB LOAD DEDUCTIONS

FIXED 31 FT JIB DEDUCTIONS

TELESCOPIC JIB DEDUCTIONS

970171978 A (SHEET 2)



BOOM LOAD CAPACITIES IN LBS. WITH SHORT SPAN OUTRIGGERS (8 FT 2 IN)

LOAD RADIUS (FT)	31 FT BOOM		51 FT BOOM		70 FT BOOM		89 FT BOOM		108 FT BOOM		127 FT BOOM	
	∠	LBS	∠	LBS	∠	LBS	∠	LBS	∠	LBS	∠	LBS
6	72	68000										
8	71	39800										
10	67	24300	77	25600								
12	63	16700	74	17800								
15	57	10600	71	11600	76	12000						
20	45	5350	65	6300	72	6700	76	6850				
25	29	2600	58	3500	68	3900	73	4100	76	4200		
30			51	1850	63	2150	69	2400	74	2450	77	2600
35			44	650	59	1050	66	1150	71	1350	74	1350
40									68	500	72	550
45												
50												
55												
60												
65												
70												

0 1100 SEE NOTE 9

500 350 300 250 200 150

1000 650 450 350 300 250

NOTE: RATINGS ABOVE THE HEAVY LINE ARE BASED ON STRUCTURAL COMPETENCE AND NOT ON MACHINE STABILITY

AREA OF OPERATION

360° CAPACITY WORKING AREA WITH MID SPAN AND FRONT BUMPER OUTRIGGERS

C/L ROTATION

8 FT 2 IN SHORT SPAN MAIN & AUX OUTRIGGERS SPREAD

DEDUCTIONS FROM RATED LOADS FOR HANDLING DEVICES

OVERHAUL BALL: 230 LBS

1-SHEAVE LOADBLOCK: 360 LBS

2-SHEAVE LOADBLOCK: 500 LBS

3-SHEAVE LOADBLOCK: 600 LBS

0° BOOM CAPACITIES

STOWED JIB LOAD DEDUCTIONS

FIXED 31 FT JIB DEDUCTIONS

TELESCOPIC JIB DEDUCTIONS

970171978 A (SHEET 3)

1 PART LOAD LINE	2 PART LOAD LINE	3 PART LOAD LINE	4 PART LOAD LINE	5 PART LOAD LINE	6 PART LOAD LINE
LOADS UP TO	LOADS UP TO	LOADS UP TO	LOADS UP TO	LOADS UP TO	LOADS UP TO
12,971 LBS. IWRC XXIP	25,942 LBS. IWRC XXIP	38,913 LBS. IWRC XXIP	51,884 LBS. IWRC XXIP	64,855 LBS. IWRC XXIP	76,000 LBS. IWRC XXIP
9,080 LBS. ROT. RESISTANT WIRE ROPE	18,160 LBS. ROT. RESISTANT WIRE ROPE	27,240 LBS. ROT. RESISTANT WIRE ROPE	36,320 LBS. ROT. RESISTANT WIRE ROPE	45,400 LBS. ROT. RESISTANT WIRE ROPE	54,480 LBS. ROT. RESISTANT WIRE ROPE
127 FT + 31 FT JIB	119 FT BOOM	87 FT BOOM	68 FT BOOM	55 FT BOOM	46 FT BOOM

MAXIMUM BOOM LENGTH AT MAXIMUM ELEVATION WITH RIGGING SHOWN TO REACH THE GROUND

SEE OWNERS MANUAL FOR OTHER REEVING OPTIONS

With certain boom and hoist tackle combinations, maximum capacities may not be obtainable with standard cable lengths.

CAUTION

OPERATOR AIDS MUST BE IN GOOD OPERATING CONDITION BEFORE OPERATING CRANE. REFER TO OWNERS MANUAL.

KEEP AT LEAST 3 WRAPS OF LOADLINE ON DRUM AT ALL TIMES.

USE ONLY 5/8" DIAMETER IWRC OR ROTATION RESISTANT WIRE ROPE WITH 45,400 LBS. MIN. BREAKING STRENGTH ON THIS MACHINE.

- ANGER**
- The operator must read, understand and follow the instructions found in the owners manual before operating this crane.
 - Positioning or operation of crane beyond areas shown on this chart is not intended nor approved except where specified in owners manual.
 - Loaded boom angles at specified boom lengths give only an approximation of the operating radius. The boom angle before loading should be greater to account for deflections. Do not exceed the operating radius for rated loads.
 - When between listed boom lengths or radii, always use the smallest of the values shown. Capacities for the 31-ft boom length must only be lifted with boom fully retracted.
 - Do not attempt to tip the machine to determine allowable loads.
 - When jib is erected boom must be fully retracted before lowering below minimum boom with jib angles. Retracted boom with jib has no lifting capacity below a 60° angle with full span outriggers and below a 65° angle with mid span outriggers.
 - Use rating of next lower boom angle for boom angles not shown on jib load rating chart.
 - Do not lift off the main boom tip while the jib is erected. Do not travel with crane boom extended or jib erected.
 - Do not lower boom into this area. Instability may occur. Hydraulic pressure may not allow raising the boom without retracting boom first.
 - Crane load ratings on outriggers are based on freely suspended loads with the machine leveled and standing on firm uniform supporting surface. Do not move a load horizontally on the ground in any direction.
 - Actual working capacities depend on supporting surface, wind and other factors affecting stability such as hazardous surroundings, experience of personnel, and proper handling. All these factors must be taken into account by the operator.
 - The maximum in service wind speed is 20 mph. It is recommended when wind velocity is between 20 mph and 30 mph rated loads and boom lengths shall be appropriately reduced and/or other measures shall be taken to ensure stability and load control. When wind speed exceeds 30 mph main boom should be retracted and stowed.
 - For duty cycle operations (e.g., clam shell, concrete bucket work) weight of load must not exceed 80% of rated lifting capacities.
 - Multi-crane lift operations must be carefully planned well in advance and should only be performed by skilled personnel experienced in such procedures.
 - When operating the crane in the "Mid Span" mode, the outrigger beam pins must be properly engaged.
 - The maximum load which may be telescoped is limited by hydraulic pressure, boom angle and boom lubrication. It is allowable to attempt to telescope any load within the limits of the load rating chart.
 - Never handle personnel with this machine unless the requirements of applicable national, state, and local regulations and safety codes are met.
 - Do not lift loads when boom is fully lowered. The LMAP senses pressure and will not provide warnings or lockout when the boom cylinder is fully retracted.
 - When operating the crane in the "Short Span" mode, the outrigger beam pins must be properly engaged. Do not operate or erect jibs in "Short Span" outrigger configuration.

- INFORMATION**
- Deductions must be made from rated loads for stowed jib, optional attachments, hooks and loadblocks (see deduction chart). Weights of slings and other load handling equipment shall be considered a part of the load.
 - Crane load ratings with outriggers are based on outriggers extended and set with all tires clear of the ground.
 - Load ratings do not exceed 85% of tipping load.
- DEFINITIONS**
- Operating radius is the horizontal distance from the centerline of rotation to the center of the vertical load line or load hook with load suspended.
 - Loaded boom angle as shown in the capacity chart is the included angle between the horizontal and longitudinal axes of the boom base after lifting rated load at rated radius.

- NOTES**
1. VERTICAL DIMENSIONS BASED ON 43" CHASSIS HEIGHT AND SUBJECT TO CHANGE
 2. HORIZONTAL DIMENSIONS BASED ON SPECIFIC CHASSIS CONFIGURATIONS AND SUBJECT TO CHANGE

- STREETSIDE**
1. ONE (1) ACCESS LADDER, MOUNTED UNDER FLATBED
 2. ONE (1) WHEEL CHOCK/HOLDER, INSTALLED UNDER FLATBED
 3. THREE (3) OUTRIGGER PADS IN HOLDER, INSTALLED UNDER FLATBED

- CURBSIDE**
1. ONE (1) WHEEL CHOCK/HOLDER, INSTALLED UNDER FLATBED,
 2. TWO (2) OUTRIGGER PADS IN HOLDER, INSTALLED UNDER FLATBED

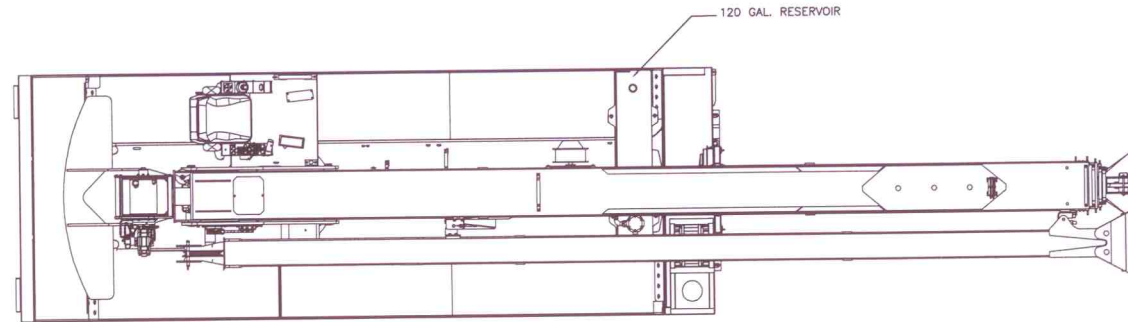
- FLATBED**
1. ONE (1) SINGLE SHEAVE LOAD BLOCK SHIPPED LOOSE

- REAR**
1. UNDERRIDE PROTECTION
 2. ELECTRIC OVER HYDRAULIC OUTRIGGER CONTROLS MOUNTED IN WATERTIGHT BOXES

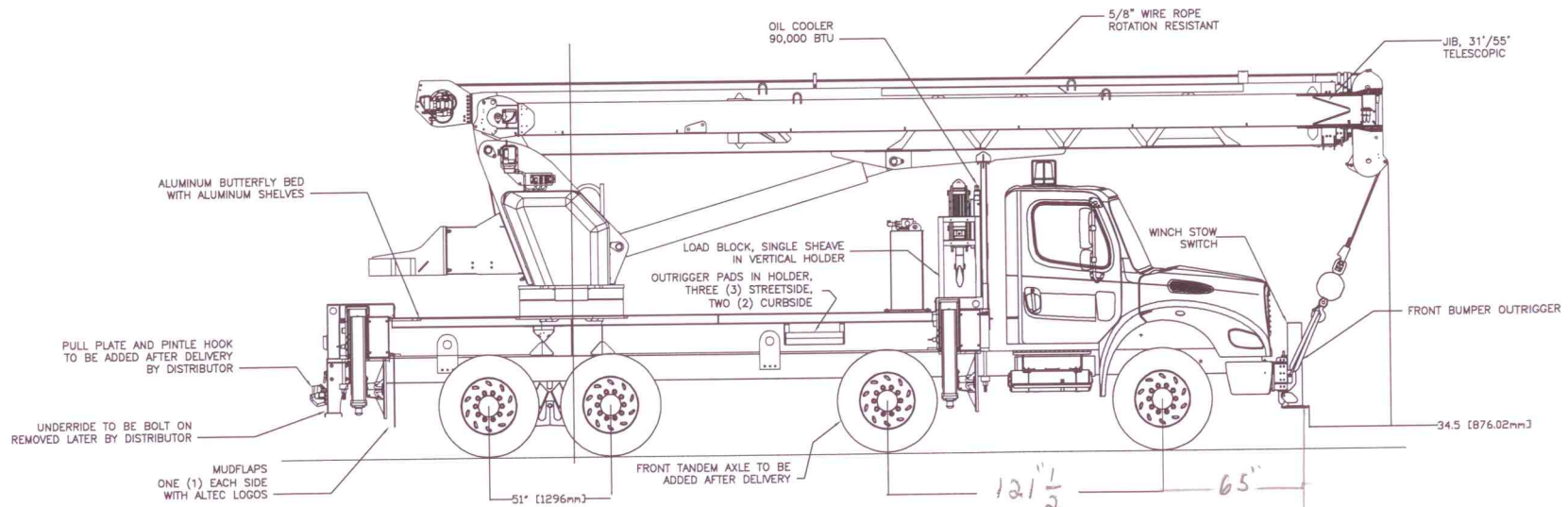
ADDITIONAL NOTES

- ADDITIONAL ITEMS TO BE LOCATED:
1. TRIANGULAR REFLECTOR KIT
 2. 5 LB FIRE EXTINGUISHER
 3. HOUR METER, INSTALLED IN DASH

REVISIONS		
A	RELEASE TO PRODUCTION	11/10 EHB



PLAN VIEW



CURB SIDE VIEW

UNIT: AC38-127S-EJ-HL

SUBBASE HEIGHT: _____

BODY CROSSMEMBERS: _____

FLATBED CROSSMEMBERS: _____

CHASSIS MAKER: FREIGHTLINER

CHASSIS MODEL: M2 112

CHASSIS YEAR: 2011

APPROVAL PRINT STAMP

- APPROVED
- APPROVED AS NOTED
- NOT APPROVED, CHANGE AS NOTED, RESUBMIT FOR APPROVAL.

NOTE: ANY CHANGES MAY AFFECT PRICE

RETURN OF APPROVAL PRINT REQ'D BY: _____

BY: _____ DATE: _____

SOLD TO: CONSULTANTS F DRAPEAU

SHIP TO: CONSULTANTS F DRAPEAU

1915 RUE DE L'INDUSTRIE
ST-MATIEU-DE BELOEIL

W.O. NO.: 94-18307007_10

NOTES: DO NOT SCALE THIS DRAWING.
REMOVE ALL SHARP CORNERS AND EDGES.

NOTICE: THIS DRAWING HAS NOT BEEN PUBLISHED AND IS THE SOLE PROPERTY OF ALTEC INDUSTRIES, INC. AND IS LENT TO THE CUSTOMER FOR CONFIDENTIAL USE ONLY, AND IN CONSIDERATION FOR THE LOAN OF THIS DRAWING, THE CUSTOMER PROMISES AND AGREES THAT IT SHALL NOT BE REPRODUCED, COPIED, LENT OR OTHERWISE DISPOSED OF DIRECTLY OR INDIRECTLY, NOR USED FOR ANY PURPOSE OTHER THAN FOR WHICH IT IS FURNISHED.

DRAWN BY:	SIGNATURE	DATE	SHEET	SCALE	SIZE	NUMBER	REV
				1:48	B	970276446	F



TITLE: CONSULTANTS F DRAPEAU

NOTES

1. VERTICAL DIMENSIONS BASED ON 43" CHASSIS HEIGHT AND SUBJECT TO CHANGE
2. HORIZONTAL DIMENSIONS BASED ON SPECIFIC CHASSIS CONFIGURATIONS AND SUBJECT TO CHANGE

STREETSIDE

1. ONE (1) ACCESS LADDER, MOUNTED UNDER FLATBED
2. ONE (1) WHEEL CHOCK/HOLDER, INSTALLED UNDER FLATBED
3. THREE (3) OUTRIGGER PADS IN HOLDER, INSTALLED UNDER FLATBED

CURBSIDE

1. ONE (1) WHEEL CHOCK/HOLDER, INSTALLED UNDER FLATBED
2. TWO (2) OUTRIGGER PADS IN HOLDER, INSTALLED UNDER FLATBED

FLATBED

1. ONE (1) SINGLE SHEAVE LOAD BLOCK SHIPPED LOOSE

REAR

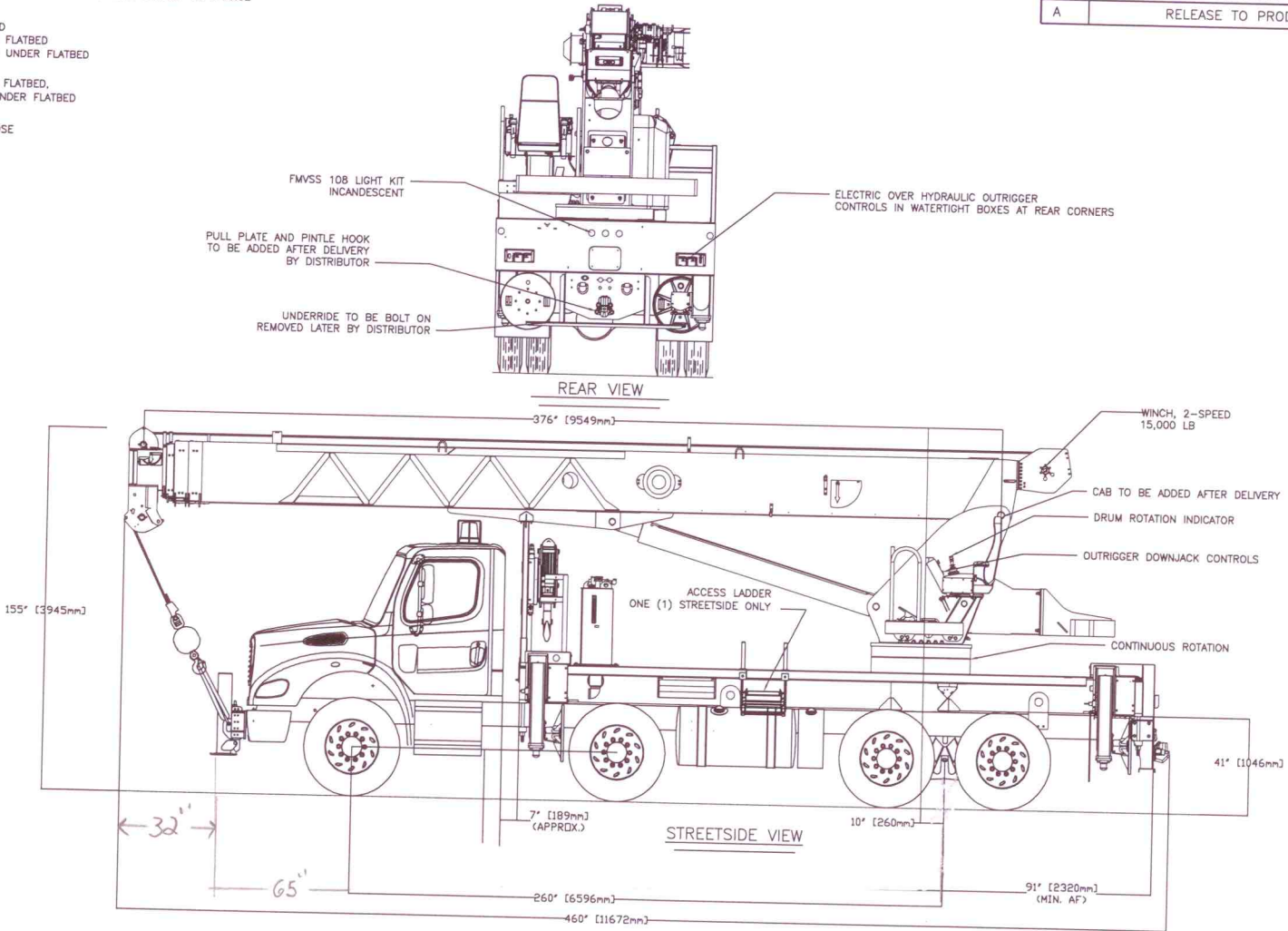
1. UNDERRIDE PROTECTION
2. ELECTRIC OVER HYDRAULIC OUTRIGGER CONTROLS MOUNTED IN WATERTIGHT BOXES

ADDITIONAL NOTES

ADDITIONAL ITEMS TO BE LOCATED:

1. TRIANGULAR REFLECTOR KIT
2. 5 LB FIRE EXTINGUISHER
3. HOUR METER, INSTALLED IN DASH

REVISIONS		
A	RELEASE TO PRODUCTION	11/10 EHB



UNIT: <u>AC38-127S-EJ-HL</u> SUBBASE HEIGHT: _____ BODY CROSSMEMBERS: _____ FLATBED CROSSMEMBERS: _____ CHASSIS MAKER: <u>FREIGHTLINER</u> CHASSIS MODEL: <u>M2 112</u> CHASSIS YEAR: <u>2011</u>	APPROVAL PRINT STAMP <input type="checkbox"/> APPROVED <input type="checkbox"/> APPROVED AS NOTED <input type="checkbox"/> NOT APPROVED, CHANGE AS NOTED, RESUBMIT FOR APPROVAL. NOTE: ANY CHANGES MAY AFFECT PRICE RETURN OF APPROVAL PRINT REQ'D BY: _____ BY: _____ DATE: _____	SOLD TO: CONSULTANTS F DRAPEAU SHIP TO: CONSULTANTS F DRAPEAU 1915 RUE DE L'INDUSTRIE ST-MATIEU-DE BELOEIL W.O. NO.: 94-18307007_10 NOTES: DO NOT SCALE THIS DRAWING. REMOVE ALL SHARP CORNERS AND EDGES.	NOTICE: THIS DRAWING HAS NOT BEEN PUBLISHED AND IS THE SOLE PROPERTY OF ALTEC INDUSTRIES, INC. AND IS LENT TO THE CUSTOMER FOR CONFIDENTIAL USE ONLY. AND IN CONSIDERATION FOR THE LOAN OF THIS DRAWING, THE CUSTOMER PROMISES AND AGREES THAT IT SHALL NOT BE REPRODUCED, COPIED, LENT OR OTHERWISE DISPOSED OF DIRECTLY OR INDIRECTLY, NOR USED FOR ANY PURPOSE OTHER THAN FOR WHICH IT IS FURNISHED.	<table border="1"> <tr> <td colspan="2">Atec INDUSTRIES, INC.</td> </tr> <tr> <td colspan="2">TITLE: CONSULTANTS F DRAPEAU</td> </tr> <tr> <td>SIGNATURE</td> <td>DATE</td> </tr> <tr> <td>E. BRADEN</td> <td>11/03/10</td> </tr> <tr> <td>CHECKED BY:</td> <td>C. CHESSON</td> </tr> <tr> <td>SHEET</td> <td>2 OF 2</td> </tr> <tr> <td>SCALE</td> <td>1:48</td> </tr> <tr> <td>SIZE</td> <td>B</td> </tr> <tr> <td>NUMBER</td> <td>970276446</td> </tr> <tr> <td>REV</td> <td>F</td> </tr> </table>	Atec INDUSTRIES, INC.		TITLE: CONSULTANTS F DRAPEAU		SIGNATURE	DATE	E. BRADEN	11/03/10	CHECKED BY:	C. CHESSON	SHEET	2 OF 2	SCALE	1:48	SIZE	B	NUMBER	970276446	REV	F
Atec INDUSTRIES, INC.																								
TITLE: CONSULTANTS F DRAPEAU																								
SIGNATURE	DATE																							
E. BRADEN	11/03/10																							
CHECKED BY:	C. CHESSON																							
SHEET	2 OF 2																							
SCALE	1:48																							
SIZE	B																							
NUMBER	970276446																							
REV	F																							