

# GUAY

# GROVE<sup>®</sup>

## RT63S

### 30 Ton Capacity

#### FEATURES

- 60,000 lbs. Capacity at 12'
- Hook Height 137 ft. maximum
- Turntable-Mounted Control Cab
- 4-Wheel Drive, 4-Wheel Steer  
4-Wheel Power-Assist Brakes
- Hoist Speeds To 360 fpm
- Front and rear hydraulic double-box telescoping beam outriggers and enclosed vertical jacks are independently controlled from cab. Maximum outrigger extension is 16' 11", center of jacks.



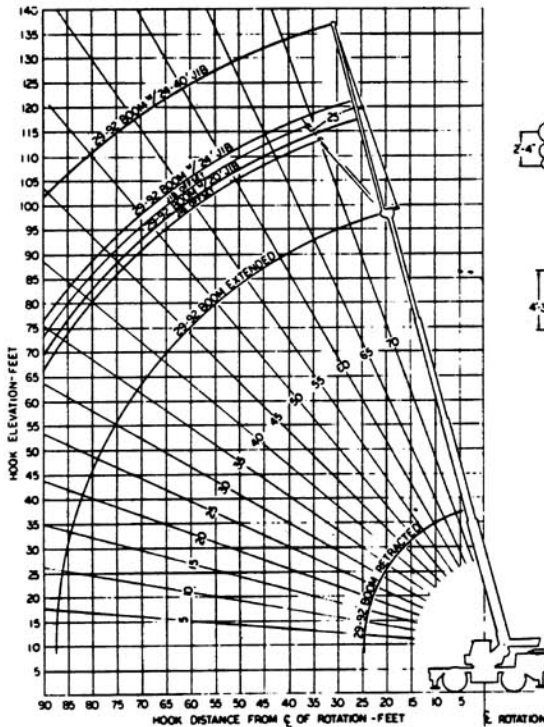
# GROVE®

# RT63S

FULL HYDRAULIC

## SELF-PROPELLED CRANE 30 TON CAP.

### RANGE DIAGRAM 29' - 92' BOOM



### 29'-92' BOOM - JIB CAPACITIES

#### 24' Jib

MIN. BOOM ANGLE	NO OFFSET	28° OFFSET
75	4000	1800
70	3750	1700
68	3500	1550
60	3250	1475
55	3000	1350
50	2750	1250
45	2500	1150
40	2250	1000
35	2000	900
30	1750	800
28	1500	675

\*Side Deflection determines capacity. Not intended for high cycle operation.

### NOTES TO LIFTING CAPACITIES

Rated lifting capacities, with fully extended outriggers, are the maximum loads covered by the manufacturer's warranty with the machine standing on a firm, level and uniform supporting surface. Capacities do not exceed 85% of tipping load. Do not exceed rated lifting capacities.

- For clamshell or concrete bucket operation, weight of bucket and load must not exceed 90% of rated lifting capacities.
- Jibs may be used for single line lifting crane service only. Jib capacities are based on structural strength of jib or main boom. Actual loads lifted must not exceed net lifting capacities for the actual operating radius.

### RATED LIFTING CAPACITIES

29' - 92' BOOM  
PCSA CLASS 12-110

OUTRIGGERS FULLY EXTENDED — 360°

Radius In Feet	Boom Length In Feet Manual Fly Retracted								Manual Fly Extd.
	32	38	44	50	56	62	68	71	
12	60,000	50,000	45,500	42,500	40,000				
15	46,500	42,000	40,000	37,000	34,500	28,000	26,000		
20	34,000	32,500	31,500	29,500	28,000	25,500	22,000	20,000	
25	23,000	22,300	21,700	21,100	20,000	19,000	18,000	17,000	11,500
30		16,300	16,300	16,300	16,300	16,000	15,500	15,000	11,000
40			11,000	11,000	10,500	10,000	10,000	10,000	9,300
50					6,700	6,600	6,500	6,500	6,500
60						4,100	4,100	4,100	4,100
70							4,100	4,100	3,300
80								2,300	2,300
88									1,500

\*Indicates maximum capacity of Extended Fly Section, regardless of Boom Length.

Capacities appearing above the bold line are based upon structural strength when lifting over the side. All capacities over the front are based on structural strength and machine stability should not be relied upon as the capacity limitation.

### ON RUBBER — FRONT

Radius In Feet	Boom Length In Feet Manual Fly Retracted								Manual Fly Extd.
	32	38	44	50	56	62	68	71	
12	40,000	40,000	40,000						
15	35,000	35,000	35,000	35,000	33,000	25,000	23,000	20,000	
20	23,000	23,000	23,000	23,000	23,000	23,000	20,000	20,000	
25			16,000	16,000	16,000	16,000	16,000	16,000	
30			12,000	12,000	12,000	12,000	12,000	12,000	
40				7,300	7,300	7,300	7,300	7,300	
50					4,200	4,200	4,200	4,200	
60						2,700	2,700	2,700	
70							1,000	1,000	

Capacities appearing above the bold line are based upon structural strength and machine stability should not be relied upon as the capacity limitation.

### ON RUBBER — 360°

Radius In Feet	Boom Length In Feet Manual Fly Retracted								Manual Fly Extd.
	32	38	44	50	56	62	68	71	
10	34,500	34,500	34,500						
12	25,000	25,000	25,000	25,000	25,000	25,000			
15	15,000	15,000	15,000	15,000	15,000	15,000			
20	11,000	11,000	11,000	11,000	11,000	11,000	11,000	11,000	
25			8,000	8,000	8,000	8,000	8,000	8,000	
30			5,000	5,000	5,000	5,000	5,000	5,000	
40					2,300	2,300	2,300	2,300	
50						1,000	1,000	1,000	

- Long cantilever booms can create a tipping condition when in extended and lowered position.
- Each power-telescoping boom should be extended equally at all times and boom length should not exceed any length restrictions shown on rated lifting capacity chart.
- The maximum load which may be telescoped is limited by hydraulic pressure, boom angle, boom lubrication, etc. It is safe to attempt to telescope any within the limits of the rated lifting capacity chart.
- Single line capacity 8,700 lbs. (Maximum). For multiple part reeving, use one part of line for each 7,500 lbs. of load to be lifted.